

DGM Machinery Co.



DGM ET80

- Agriculture, construction, material handling
civil engineering works and road construction
- Operating weight: 8080kg
- Power: 55kW



Power, Performance
and Reliability

DGM ET80

Crawler Excavator



Engine	
Model	Yanmar 4TNV98T
Type	turbocharged; 4 stroke, direct injection, water cooled
Nb. of cylinder	4
Bore and stroke	98X110(mm)
Displacement	3.319L
Power output	54.3kw/2200rpm
Max. torque	277~301N.m/1650±100 rpm

Travel System	
Travel motors	Eaton
Support roller quantities	2x6
Carrier roller quantities	2x1
Travel shoes	2X39
Travel speed	3.6/5.3(km/h)
Drawbar pulling force	63.5kN
Gradeability	70%(35°)
Track shoes thickness	8.5mm

Hydraulic System	
Pump	KPM
Type	variable double-piston pump
Max. discharge flow	2X79.2(L/min)
Max. discharge pressure	
Boom, arm and bucket	27.5 MPa
Travel circuit	23.5 MPa
Swing circuit	23.5 MPa
Control circuit	3.9 MPa
Pilot control pump	Gear type
Main control valves	KYB, Japan
Oil cooler	Air cooled type

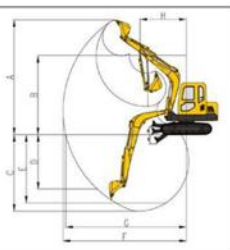
Cab & Electrical System	
Cab	Cab installed with silicon oil rubber, adjustable luxurious seat, cold and warm air-conditioning system plus flexible pilot control system
Booms, Arm & Bucket	
Boom cylinder	Ø110xØ75x1000-L1480
Arm cylinder	Ø110xØ65x5870-L1335
Bucket cylinder	Ø55xØ90x5710-L1115

Swing System	
Swing motor	KYB
Swing motor type	Axial-piston motor
Brake	Hydraulic oil released
Parking brake	Hydraulic disc brake
Swing speed	11 r/min

Refilling Capacity & lubrication	
Fuel tank	135 L
Cooling system	18 L
Engine oil	10.5 L
Hydraulic oil tank	92 L Tank Oil Level
	128 L Hydraulic System

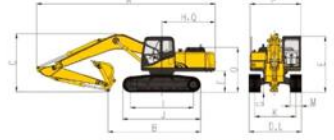
Bucket	
Type	Backhoe bucket
Bucket capacity	0.34m³ (SAE)
Bucket Capacity scope	0.105-0.51m³
Number of bucket teeth	5
Bucket width	824 mm

Working Ranges	
Boom length	3905mm
A Max. digging height	7280mm
B Max. dumping height	4970mm
C Max. digging depth	4205mm
D Max. vertical digging depth	3200mm
F Max. digging distance	6800mm
G Max. digging reach at ground level	6605mm
H Min swing radius of work equipment	2160mm



Digging Force (ISO6015)	
Arm length	1750mm
A Bucket digging force	60.8 kN
B Arm digging force	47.1 kN

Overall Dimensions	
A Overall length	6470mm
B Ground contact length	3400mm
C Overall height(to top of boom)	2545mm
D Overall width	2250mm
E Overall height(to top of cab)	2600mm
F Counter weight ground clearance	820mm
G Min ground clearance	403mm
H Tail swing radius	1870mm
I Track grounding length	2200mm
J Track length	2785mm
K Track gauge	1800mm
L Track width	2250mm
M Track shoe width	450mm
N Counter weight height	1785mm
O Revolving frame width	2195mm
P Distance from swing center to tail	1870mm



Operating Weight and Ground Pressure	
Operating weight includes basic machine;	
Operating weight	8080 Kg
Ground pressure	39 kPa

Goff Agri & Plant Sales,
Bridgetown,
Co. Wexford,
Ireland

+353 (0)53 913 5219
+353 (0)86 820 4195
goffagri@gmail.com
www.goffagri.ie

